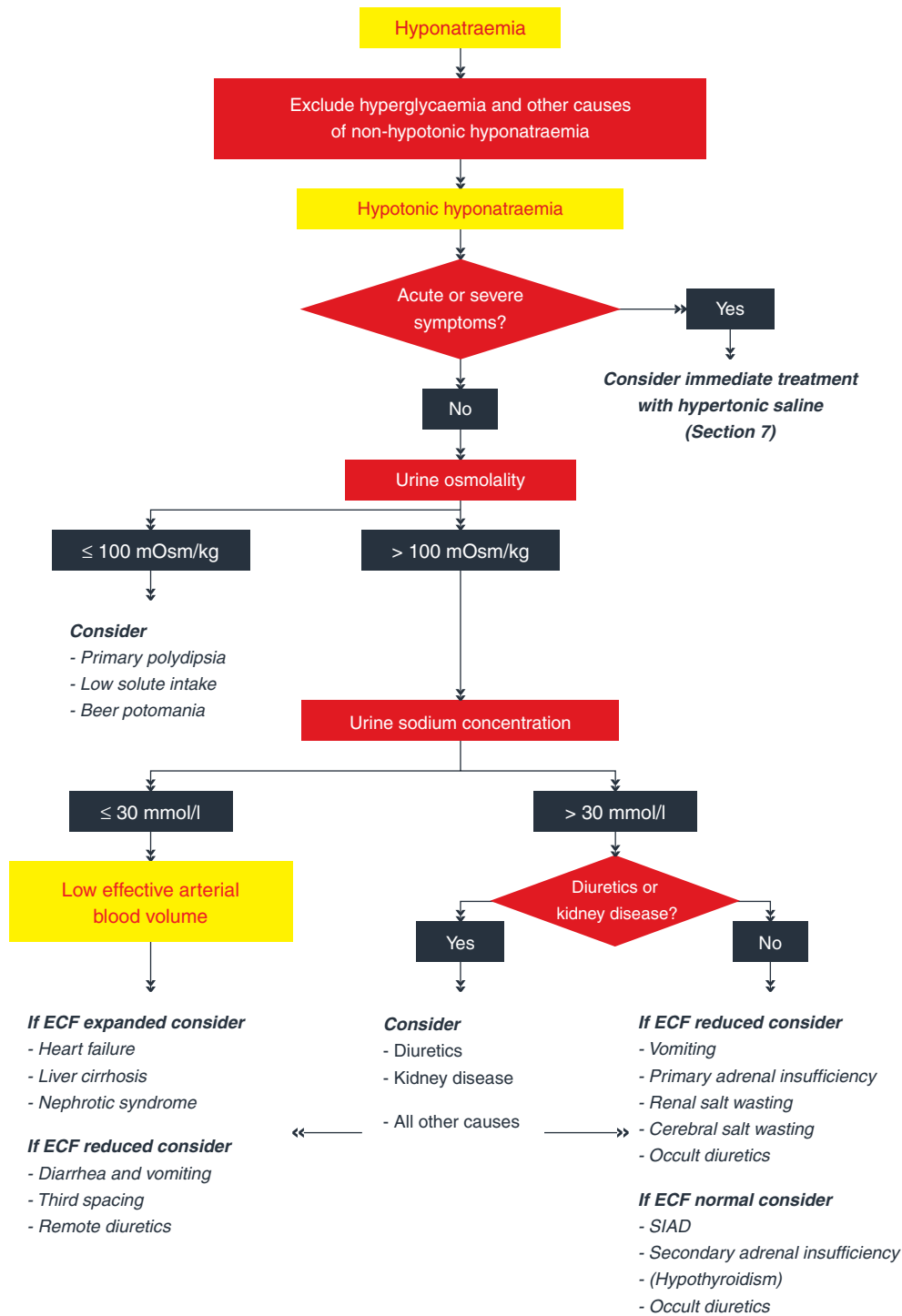


**Table 7** Causes of the syndrome of inappropriate antidiuresis. Adapted from Liamis G, Milionis H and Elisaf M. A review of drug-induced hyponatraemia. *American Journal of Kidney Diseases* 2008 **52**: 144–153. (247)

Malignant diseases	Pulmonary disorders	Disorders of the nervous system	Drugs	Other causes
Carcinoma Lung	Infections Bacterial pneumonia	Infection Encephalitis	Vasopressin release or action stimulants Antidepressants	Hereditary Gain-of-function mutation of the vasopressin V2 receptor
Oropharynx Gastrointestinal tract Stomach	Viral pneumonia Pulmonary abscess Tuberculosis	Meningitis Brain abscess Rocky Mountain spotted fever	SSRIs Tricyclic MAOI	Idiopathic Transient Exercise-associated hyponatraemia
Duodenum Pancreas Genitourinary tract Ureter	Aspergillosis Asthma Cystic fibrosis Respiratory failure associated with positive-pressure breathing	AIDS Malaria Vascular and masses Subdural hematoma	Venlafaxine Anticonvulsants Carbamazepine Oxcarbazepine	General anaesthesia Nausea Pain Stress
Bladder Prostate Endometrium Endocrine thymoma Lymphomas Sarcomas Ewing's sarcoma Olfactory neuroblastoma		Subarachnoid haemorrhage Stroke Brain tumours Head trauma Other Hydrocephalus Cavernous sinus thrombosis Multiple sclerosis Guillain-Barré syndrome Shy-Drager syndrome Delirium tremens Acute intermittent porphyria	Sodium valproate Lamotrigine Antipsychotics Phenothiazides Butyrophenones Anticancer drugs Vinca alkaloids Platinum compounds Ifosfamide Melphalan Cyclophosphamide Methotrexate Pentostatin Antidiabetic drugs Chlorpropamide Tolbutamide Miscellaneous Opiates MDMA (XTC) Levamisole Interferon NSAIDs Clofibrate Nicotine Amiodarone Proton pump inhibitors MABs Vasopressin analogues Desmopressin Oxytocin Terlipressin Vasopressin	

AIDS, acquired immunodeficiency syndrome; MOAI, monoamine oxidase inhibitors; MDMA, 3,4-methylenedioxymethamphetamine; NSAIDs, non-steroidal anti-inflammatory drugs; SSRIs, selective serotonin reuptake inhibitors.



**Figure 6**

Algorithm for the diagnosis of hyponatraemia.